

**Flinching:**

If any player slaps incorrectly or even starts to slap but jerks back (flinching) they forfeit the round and add the cards in the central pile to the bottom of their individual pile.



**Pace:**

Players must keep a steady rhythm and if a player forgets what they are meant to say or doesn't realize it's their turn, they must take all the cards in the central pile and add these to the bottom of their individual pile.

-8-

**No peeking!**

Players must add cards to the central pile by flipping them while holding the top of the card. If a player clearly peeks at their card before adding it to the pile, they forfeit the round and must take all the cards in the central pile and add these to the bottom of their individual pile.



-9-

**Special cards:**

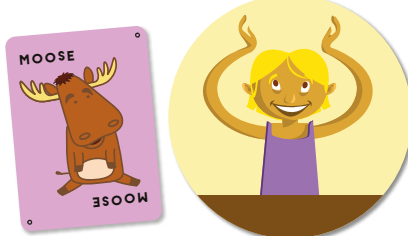
As soon as a special card is flipped over, all players must carry out the actions below before slapping the central pile. If a player carries out the wrong action or is the last player to slap the pile, they must take all the cards in the central pile.

**Panda:** players rub their belly with one hand.



-10-

**Moose:** players use both hands to make antlers on their head.



**Sea Lion:** players clap twice.



-11-

**End of the game**

The winner is the FIRST player with no more cards in their individual pile who slaps the central pile FIRST when there is a match or a special card.

You can mix the cards from this game with those from **TACO CAT GOAT CHEESE PIZZA**.

The game rules are the same.

The two decks of cards can be separated at the end of the game by removing those with a small sun.



© 2022 Blue Orange Edition. © Copyright 2020 Dolphin Hat Games LLC. Taco Back Goat Cheese Pizza and Blue Orange are trademarks of Blue Orange Edition, France. Game published and distributed under license by Blue Orange, 97 impasse Jean Lamour, 54700 Pont-à-Mousson, France. [www.blueorangegames.eu](http://www.blueorangegames.eu)

-12-



**Game Contents**

- 64 cards



**Introduction**

Taco Cat Goat Cheese Pizza! Keep this crazy string of words in mind. As soon as there is a match between a card and a spoken word, race to slap the right side of your hand on the central pile of cards. The last person to do so must take them all! Be quick to get rid of all your cards, but watch out! Your mind will play tricks on you. This addictive game is as unique as its name!

-2-

**Object of the Game**

Get rid of all your cards and be the FIRST to slap your hand on the central pile of cards when there is a match or a special card appears.

**Setup**

Shuffle and then distribute cards evenly amongst players, face down. For a 2, 3, 4 or 5 player game, each player is dealt 12 cards.



Extra cards are returned to the box. Players do not look at their cards and place them in a pile in front of them, face down. This pile is their individual pile.

-3-

**How to Play**

The dealer is the first player for the first round. The game is played in successive rounds.

The first player takes the first card from their pile and places this face up in the center of the table, saying "Taco".



The game is played in clockwise turns, with the next player placing their card face up on top of the previous card, saying "Cat".

**Matches**

Play continues in this way, with the words "Taco", "Cat", "Goat", "Cheese", "Pizza", "Taco", "Cat", "Goat", "Cheese", "Pizza" ...

-4-

being said in order until the card that has just been put down matches the word spoken.

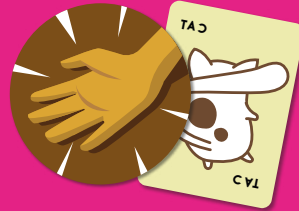


For example: a player puts down a Pizza card while saying "Pizza".

At this point, all the players must slap their hands on top of the central pile as quickly as possible. The last player to slap takes the entire central pile and puts the cards face down at the bottom of their individual pile. This player becomes the first player for the next round.

-5-

**Back cards:**



If a reversed Flip Side card is played and the matching word is said, players must slap **the back of their hand** on the central pile. If a Flip Side special card is played, players must do the special action for that card before slapping the back of their hand on the central pile. If one or more players use(s) the wrong side of their hand, the first player who made the

-6-

mistake (the player with their hand underneath other players' hands) loses the round and must take all the cards from the central pile and put them at the bottom of their individual pile.

**Clarification:**

If a player has gotten rid of all their cards, they must keep saying "Taco, Cat, Goat, etc..." on their turn and be the FIRST player to slap their hand on the central pile when there is a match or special card to win.

If they do not slap the central pile FIRST then a new round begins and they keep playing until they manage to slap the pile FIRST.

-7-